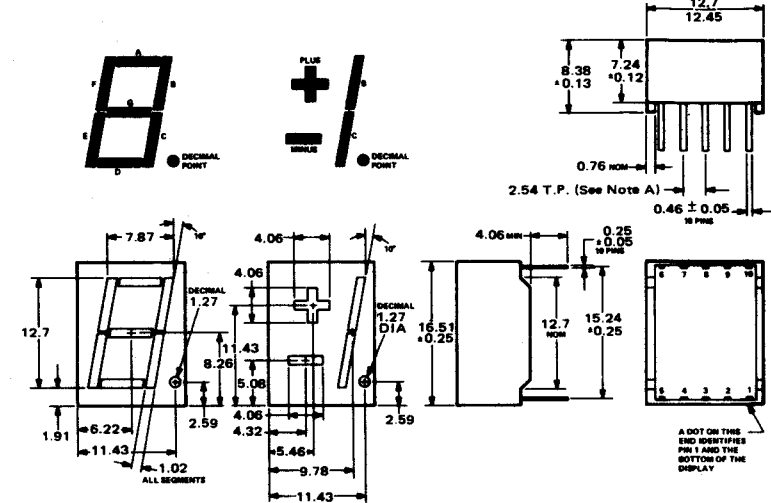


LED Displays Low Cost Range

Device Type	Type of Character(s)	Character Height (inches)	Colour of Display	Package	Key Features						
TIL312	7-segment	0.300	Red	14-lead dual-in-line plastic	TIL312 has common-anode, right and left decimals						
TIL313						Green	14-lead dual-in-line plastic	TIL313 has common-cathode, right decimal only			
TIL314									Amber	14-lead dual-in-line plastic	TIL314 has common-anode, right and left decimals
TIL315											
TIL316	Right decimal	14-lead dual-in-line plastic	TIL316 has common-anode, right and left decimals								
TIL317				Left decimal	14-lead dual-in-line plastic	TIL317 has common-cathode, right decimal only					
TIL327							Green	14-lead dual-in-line plastic	Left decimal		
TIL328										Amber	14-lead dual-in-line plastic
TIL329	Red	14-lead dual-in-line plastic	Left decimal								
TIL321A				10-lead dual-in-line plastic	Right decimal. TIL321 is common-anode, TIL322 is common-cathode						
TIL322A						Right decimal. TIL323 is common-anode, TIL324 is common-cathode					
TIL323A							Right decimal. TIL325 is common-anode, TIL326 is common-cathode				
TIL324A	Right decimal	10-lead dual-in-line plastic	Right decimal								
TIL325A				Right decimal	10-lead dual-in-line plastic			Right decimal			
TIL326A						Right decimal			10-lead dual-in-line plastic	Right decimal	
TIL330A							Green				10-lead dual-in-line plastic
TIL331A	Amber	10-lead dual-in-line plastic	Right decimal								
TIL332A				Common-anode	10-lead dual-in-line plastic			Common-anode			
TIL701						Common-cathode			10-lead dual-in-line plastic	Common-cathode	
TIL702							Common-cathode				10-lead dual-in-line plastic
TIL703	Common-cathode	10-lead dual-in-line plastic	Common-cathode								
TIL704				Common-cathode	10-lead dual-in-line plastic			Common-cathode			

- 2 and 4 digit versions available.
- Hermetic versions available—details on request.

TIL321A THRU TIL326A, TIL342, TIL343, TIL345, TIL346



END, SIDE, AND BOTTOM VIEWS FOR ALL TYPES

TIL321A, TIL323A, TIL325A, TIL342, TIL345

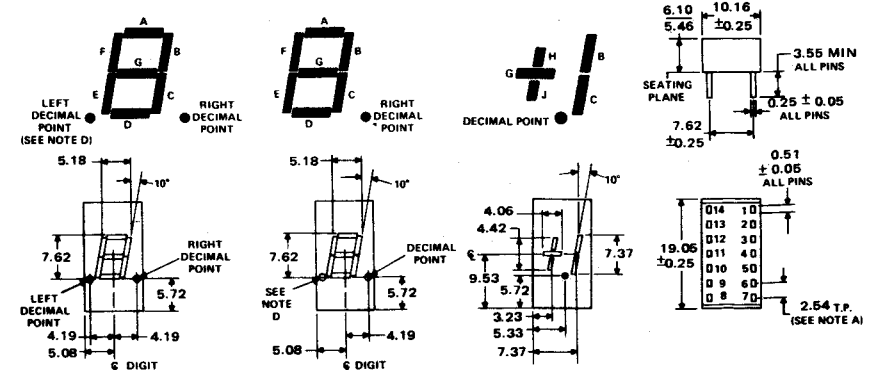
TIL322A, TIL324A, TIL326A, TIL343, TIL346

TIL330A, TIL331A, TIL332A, TIL344, TIL347

TIL312, TIL314, TIL316, TIL336, TIL339

TIL313, TIL315, TIL317, TIL337, TIL340

TIL327, TIL328, TIL329, TIL338, TIL341



END AND BOTTOM VIEWS AND TERMINAL DETAIL FOR ALL NINE TYPES