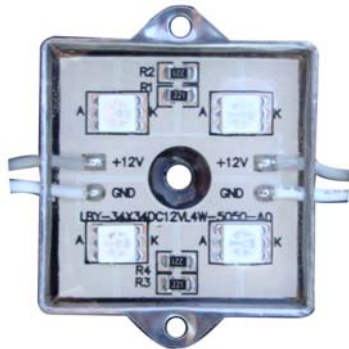




5050 SMD 4-Led Module

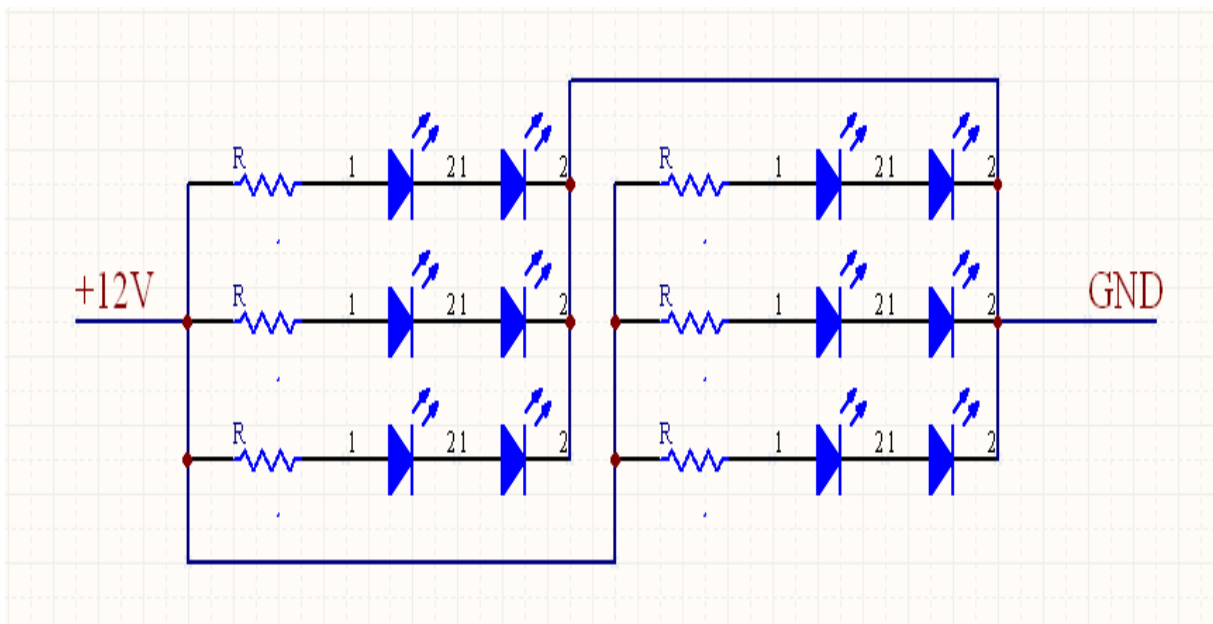


- Waterproof grade:IP65
- Easy installation
- CE,ROHS,SGS Standard

Features :

- Super long lifetime,above 50,000 hours
- Low Power,one module only costs 0.63W
- Super high bright 5050 SMD as light source
- DC12V,low voltage,very safe
- Little heat dissipation

Internal circuit diagram



Application

- Lighting box
- Channel letters
- Solid lighting letters
- Advertising signs
- Logo
- Landscape lighting
- Indoor decoration

Product Introduction

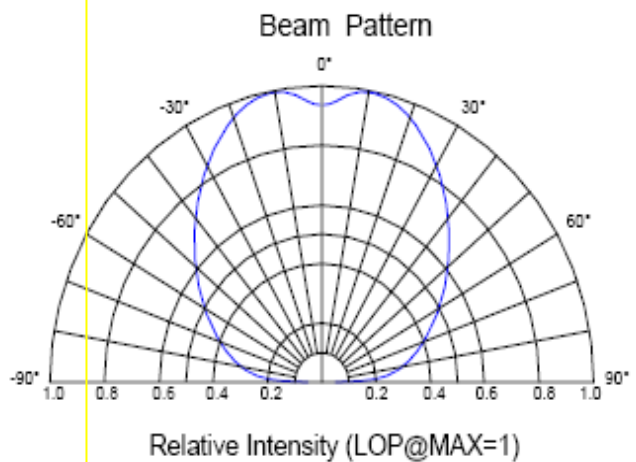
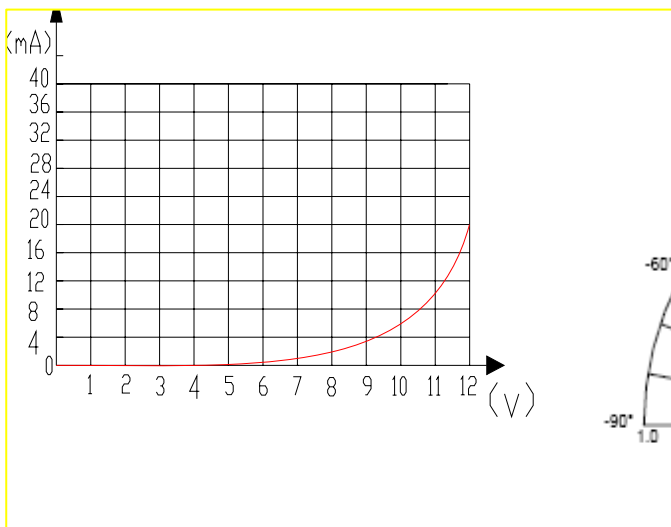
5050 smd 4-leds high power module waterproof, single color modules designed and produced by ourselves .taking super high brightness 5050 smd as light source,pure light,no spot,the case uses exported PC material,good corrosion resistance,using epoxy glue for sealing.good waterproof character,could reach IP65,fully meet installation standard of outdoor lights,fixed hole and 3M tape both are available for installation,it is very convenient to transport and use.

Parameters:

Basic parameter:			
Color	White	LED Type	5050 SMD LED
LED Quantity	4PCS	Dimension	35×35 ×5mm
Module Interface	2×0.5mm ² ×80mm RV	Interface	Gray is anode,white is cathode
Cluster Quantity	20pcs	Distance	80mm±5%
Weight	15g±5%	Lifespan	MTBF > 50000 hours
Environment Parameters:			
Working temperature	-40℃ ~ +60℃		
Waterproof Grade	IP65		
Electrical Specification:			
Input Voltage	DC12V±5%	Power	0.84W~1.2W
Driving mode	Invariablenes Voltage		
Light Performance			
Luminous Flux	> 60LM		
Beam Angle	>150°		
Package Details			
One bag	100 pcs module	One Carton	1000 pcs

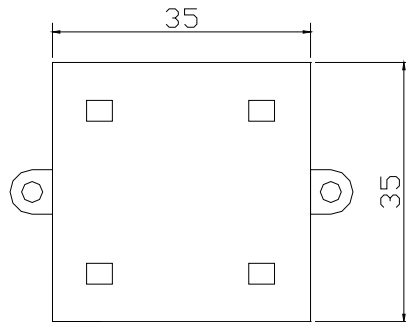
Voltage-Current Curve

Spectral C urve

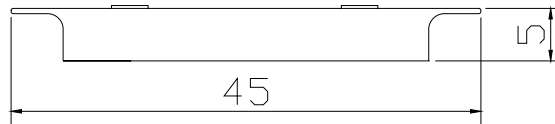


Dimension:

Top view

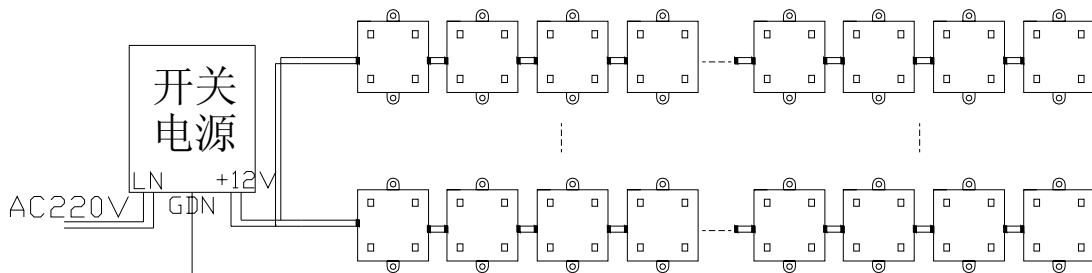


Front view

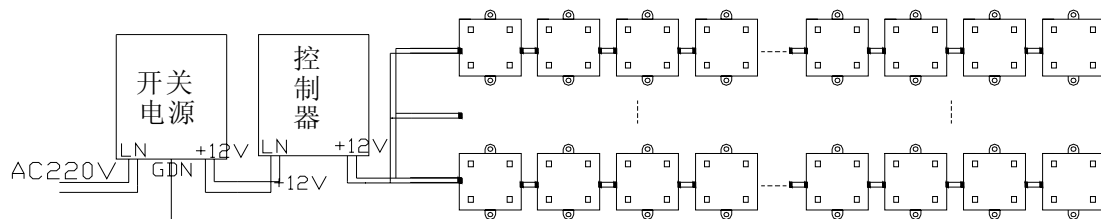


Installation

1. Single Color Module Installation



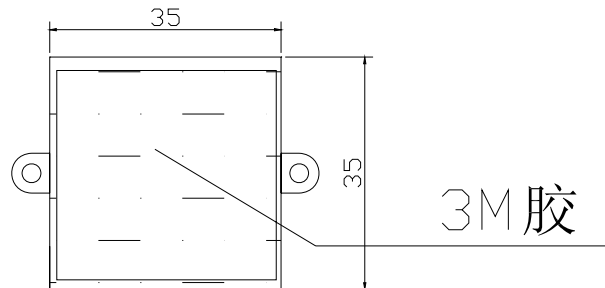
2. RGB Color Module Installation



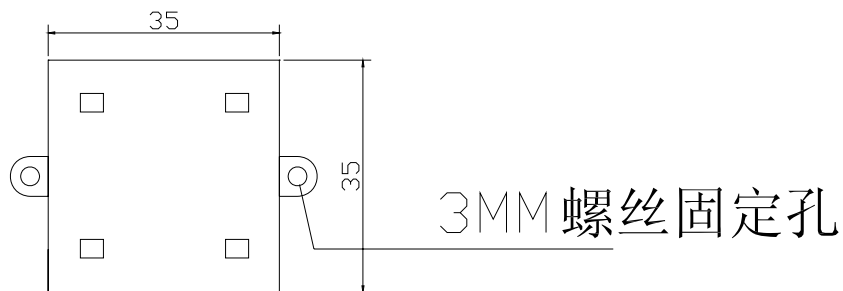


Installation Guide

1. 3M Tape Installation. please attach the 3M tape on the back of module as below, then fix the
2. module in corresponding place.



3. Srew installation. Please use $\varnothing 3$ screw to fix the mounting hole to corresponding place as below



Notice:

- 1.this led module could not be strongly squeezed
2. this led module have not integrated short circuit protection,overload and overheat protection, so the connected equipment and power supply should support steady protection to avoid above danger happen.
3. Led Module Installation must comply with general electrical safety standards, only qualified electrician can install.
4. power supply polarity can not be reversed while installing, gray wire is anode, red ,green and blue wires seperately control red ,green and blue light.
- 5.we seriously consider current and wire impedance while designing, each string could be at most 20pcs modules, if more modules in one string, will largely affect the brightness and safety. When you need connect more than 20pcs together, sincerely suggest series connection

LBY-5F12T3535-4W

for 20pcs, than parallel connection with each other.

6. when choosing power supply for modules, please keep 20%-30% power of the power supply left.
when choosing wires, please also keep some space according to current.

7. because Led is very easy to be affected by static electricity, please comply with standard static precautions when installing and removing the modules. sincerely suggest you could take below ways:

- 1) Electrician should wear anti-static wrist and properly grounded
- 2) Power Supply shell should be strictly grounded
- 3) All machines during installation should be strictly grounded



Shenzhen Lingbenyang Industry Co.,LTD