

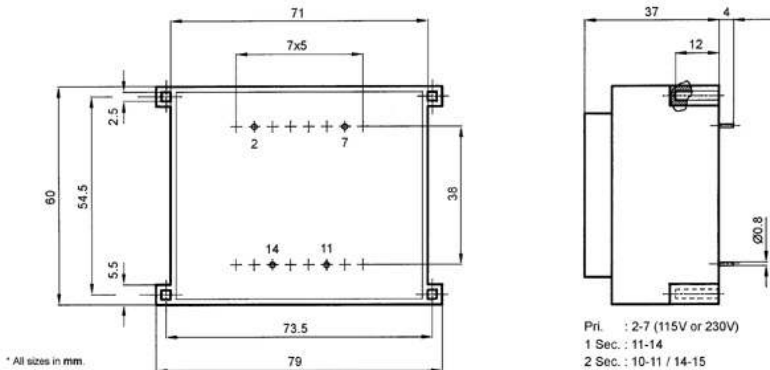
## STANDARD ENCAPSULATED

Format	Power	Weight
EI66/16	20 VA	550 grs.

Code	Primary	Secondary	Ta/DT/CT	Primary Protection	Secondary Protection
1121998	230V	2x18V-2x0.55A	40°C/45°C/B	-	2x630mA/F

HOMOLOGACIONES
UL Canada / MEEI / UL USA / RoHS

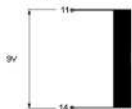
## MEASURES AND DIMENSIONS



## ESQUEMA

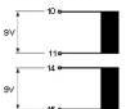
### Conexión 1 Secundario / 1 Secondary Connections

(Ejemplo / Example)  
**Esquema**  
 Circuit arrangement  
 9V - 5A

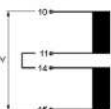


### Conexión 2 Secundarios / 2 Secondary Connections

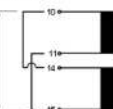
(Ejemplo / Example)  
**Esquema**  
 Circuit arrangement  
 2x9V - 2x0.5A



**Conexión Serie**  
 Series connection  
 18V - 2.5A



**Conexión Paralelo**  
 Parallel connection  
 9V - 5A



## IMAGES

