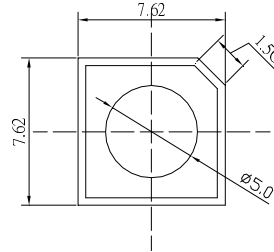


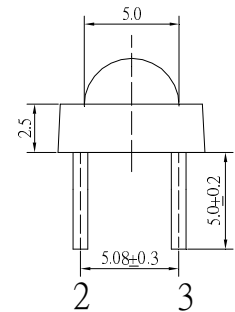
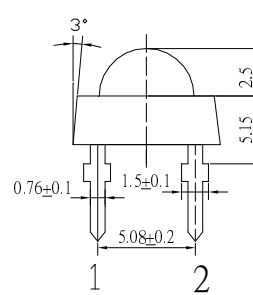
■Features

- High Luminous Super Flux Output
- Low Thermal resistance
- UV Resistant Epoxy
- Long Lifetime Operation
- Water Clear Type

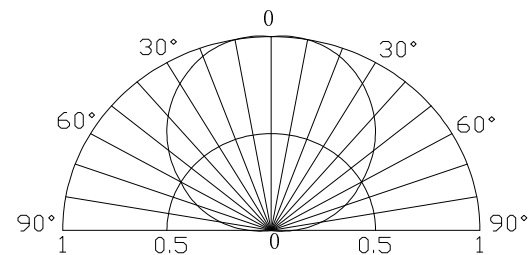
■Applications

- General Purpose Indicators
- Small Area Illuminations
- Back Lighting
- Other Lighting

■Outline Dimension

 Unit:mm
 Tolerance: ± 0.3 mm

 1,4 ANODE
 2,3 CATHODE

■Absolute Maximum Rating
(Ta=25°C)

Item	Symbol	Value	Unit
DC Forward Current	I_F	40	mA
Pulse Forward Current*	I_{FP}	100	mA
Reverse Voltage	V_R	5	V
Power Dissipation	P_D	144	mW
Operating Temperature	Topr	-30 ~ +85	°C
Storage Temperature	Tstg	-40 ~ +100	°C
Lead Soldering Temperature	Tsol	260°C / 5sec	-

■Directivity


*Pulse width Max. 10ms , Duty ratio max 1/10

■Electrical -Optical Characteristics
(Ta=25°C)

Item	Symbol	Condition	Min.	Typ.	Max.	Unit
DC Forward Voltage	V_F	$I_F=30$ mA	3.0	3.2	3.6	V
DC Reverse Current	I_R	$V_R=5$ V	-	-	10	μ A
Domi. Wavelength	λ_D	$I_F=30$ mA	465	470	475	nm
Luminous Intensity	I_v	$I_F=30$ mA	1200	1500	1800	mcd
50% Power Angle	$2\theta_{1/2}$	$I_F=30$ mA	-	120	-	deg

 *1 Tolerance of dominant wavelength is ± 1 nm

 *2 Tolerance of luminous intensity is $\pm 15\%$
LED & Application Technologies
