



House amplifiers Apartment amplifiers

- splitband amplifiers with separate gain adjustment in VHF and UHF ranges
- die-cast housing inside plastic case
- built-in power supply

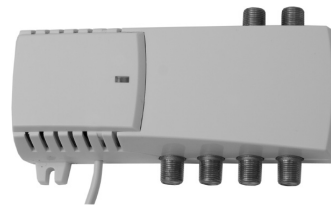
HS016
amplifier with two outputs

HS017
amplifier with four outputs

HS018
amplifier with two outputs;
with low VHF gain

HS019
amplifier with four outputs;
with low VHF gain

CABRIOLINE



Technical specifications

| T Y P E | HS016 | HS017 | HS018 | HS019 |
|---------------------------------------------|--------------------------|--------------------|--------------------|-------------------|
| Ordering number | 02523 | 02524 | 02525 | 02526 |
| Frequency range | 47-240, 470-862 MHz | | | |
| Outputs number | 2 | 4 | 2 | 4 |
| Gain (fixed slope pre-correction) | 20-22 dB, 20-22 dB | 18-20 dB, 18-20 dB | 10-12 dB, 20-22 dB | 8-10 dB, 18-20 dB |
| Gain adjustment | VHF 15 dB, UHF 12 dB | | | |
| Maximal output level IMD3=60 dB (DIN45004B) | 104 dB μ V | 100 dB μ V | 104 dB μ V | 100 dB μ V |
| Input and output return loss | > 10 dB | | | |
| Noise figure | VHF < 4.5 dB, UHF < 3 dB | | | |
| Test point attenuation | -20 dB | | | |
| Outputs decoupling | > 16 dB | | | |
| Power consumption | 230 V~ 50 Hz 3.5 W | | | |
| Operating temperature range | -20° ÷ +50° C | | | |
| Dimensions/Weight (packed) | 133x73x 39 mm/0.36 kg | | | |

